A glowing lightbulb is drawn on a chalkboard. The lightbulb is the central focus, with a bright yellow and orange glow emanating from its center. The background is a dark, textured chalkboard with some faint, light-colored markings. The text is overlaid on the left side of the lightbulb.

Utah Is Innovating!

The Quick Hits of Projects From Around the State

ULCT Annual Convention

Presenters

Wyatt Anderson, Atwood Innovation Plaza at UTU

Nicole Cottle, Mayflower Mountain Resort

Ben Hart, Utah Inland Port Authority

Travis Kyhl, Central Utah Agri-Park

Jefferson Moss, The Point Innovation District

Jeremy Pearson, USU San Rafael Energy Research Center

Dustin Maughan, Program Manger, ASPIRE EV Research at USU

LaNiece Davenport, Mountainland Association of Governments (Moderator)

Wyatt Anderson, Atwood Innovation Plaza at UTU



Five County
Association of Governments

**SOUTHWEST UTAH
ENTREPRENEURSHIP
&
INNOVATION**



UT
ATWOOD
INNOVATION PLAZA
UTAH TECH UNIVERSITY



**UTAH TECH INNOVATION DISTRICT
CORE INDUSTRY SECTORS**

Desert
Technology

Genomics

Endurance
Sport Tech



HEAIC
Utah's Economic Advancement Institute

CEDAR CITY BUSINESS AND
**INNOVATION
CENTER**

Nicole Cottle, Mayflower Mountain Resort

MAYFLOWER MOUNTAIN RESORT



UTAH LEAGUE OF
CITIES AND TOWNS

Military Installation Development Authority (MIDA)



MIDA is an “authority” created by the Utah Legislature in 2007 to facilitate the development of military land in Utah. It serves a dual role of helping strengthen the military presence in Utah while stimulating the state’s economy.

MIDA was given authority in 2012 through legislation (Title 63H, article 1, section 502 ([UT Code § 63H-1-502 \(2012\)](#))), to issue and allow Tax Increment Funding (TIF).

MIDA and Wasatch County partnered via an interlocal agreement.

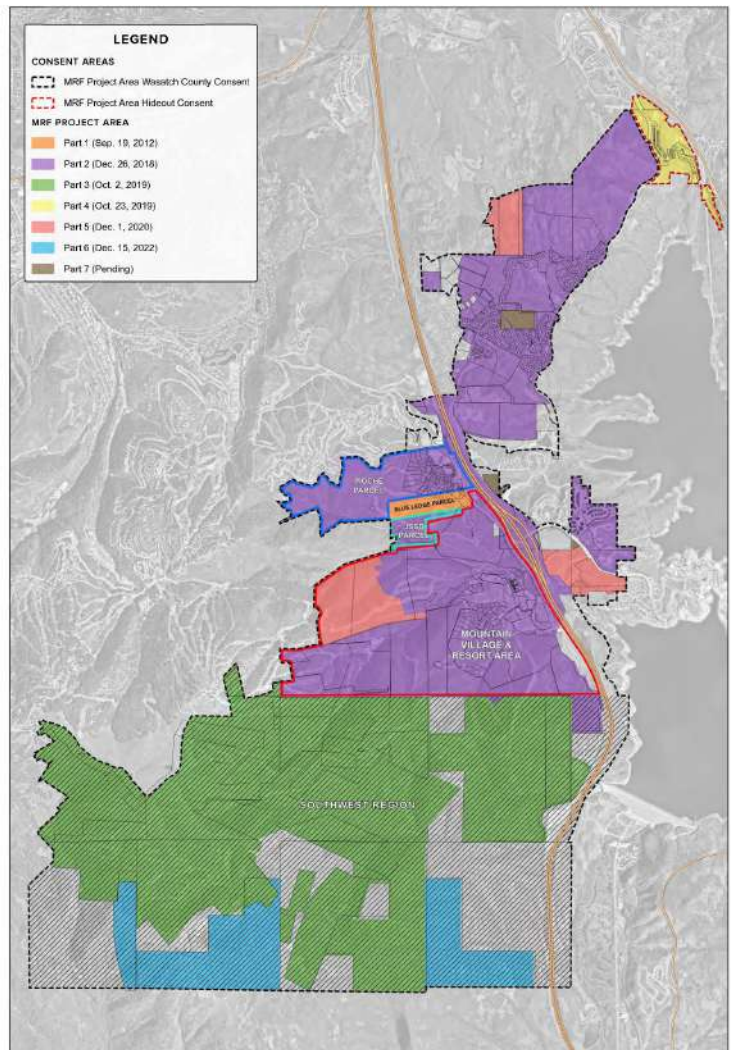


Military Recreation Facility (MRF) Project Area

Summer 2019



Summer 2023



History of Mayflower Project



Planned Resort Development

- 3,700 acres of skiable terrain under operation by Deer Valley Resort
- Village concentrated on 580 acres
- MWR Hotel with 387 keys and 55 private residences, currently under construction
- Approx. 1,700 residential units
- 250,000 SF of retail and F&B
- Luxury recreation facility



Workforce Housing



Donate

Wasatch County gives state agency authority over 70 acres

KPCW | By Ben Lasseter

Published March 3, 2023 at 3:15 PM MST



Wasatch County

Development plans in land that a state agency known as "MIDA" just took control over include 140 affordable housing units, as sketched in the green-shaded area.

Wasatch County has handed over control of 70 acres of land to the state for affordable housing and commercial development.

Military Specific Fundamentals

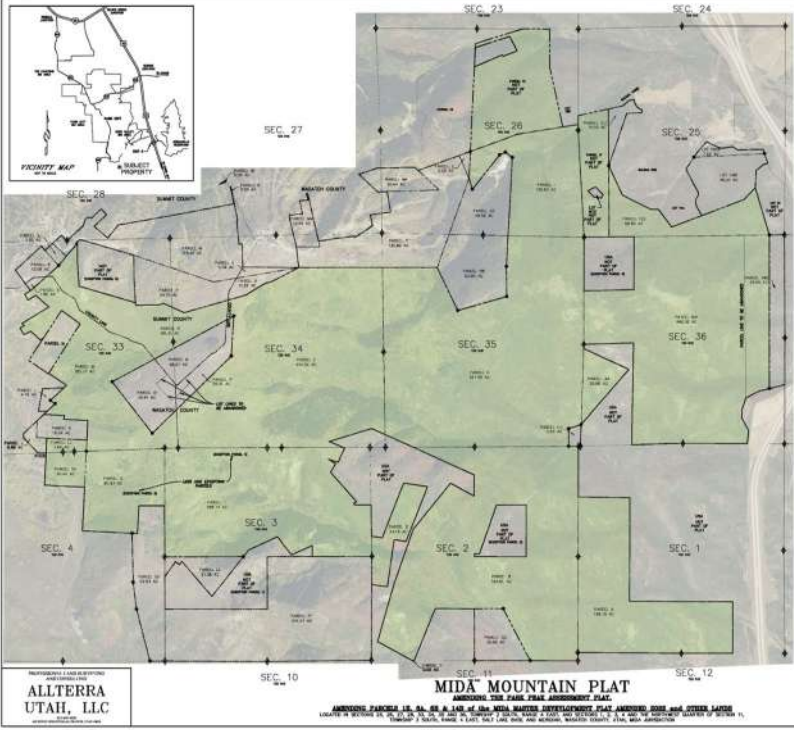


MWR Lounge



MWR Conference Hotel, August 2023

Conservation Easement



Conservation Easement
Boundary Map



An aerial photograph of a snowy mountain landscape at sunset. The sun is low on the horizon, casting a warm glow over the snow-covered hills and a large lake in the center. The sky is a mix of blue, purple, and orange. In the foreground, there are winding roads and some buildings.

Mayflower Mountain Resort PARK CITY, UT

Visit [ExtellMountainVillage.com](https://www.ExtellMountainVillage.com) to register your interest and stay up-to-date!

Ben Hart, Utah Inland Port Authority



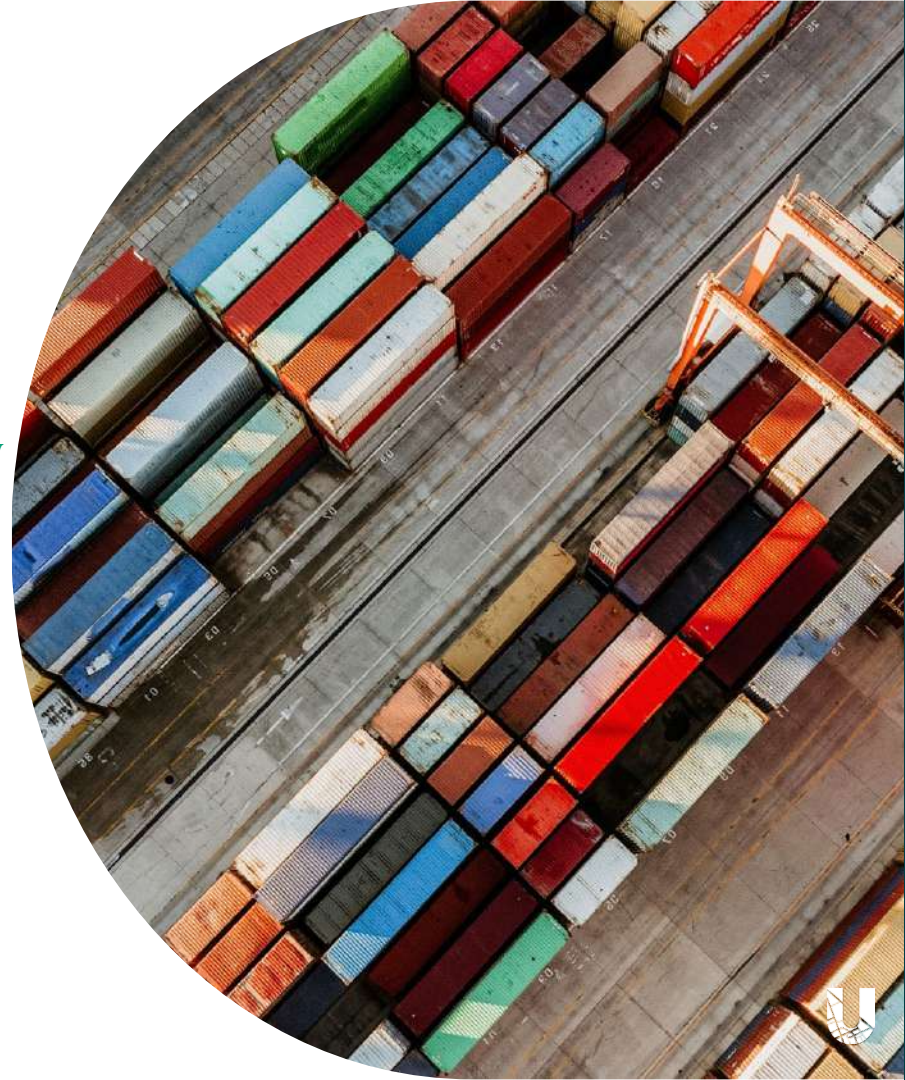
09.7.23



The State of the Port

Primary Goals

- Create efficient domestic and global cargo flow through inland port facilities
- Synergize investments to grow regional economies with sustainable growth
- Strengthen Utah's shipping industry



How We Achieve Our Mission & Vision

Synergize investments to grow regional economies with sustainable growth.



Port Facilities & Infrastructure

Inland Port
Dillon, South Carolina





Current & Proposed Project Areas

Project	Status
Northwest Quadrant	In Implementation
Iron Springs	Adopted and in Implementation
Spanish Fork	Adopted and in Implementation
Box Elder	Adopted and in Implementation
Juab/Six County	Up for Adoption on September 12th
Beaver County	Up for Adoption on October 4th
Tooele County	Up for Adoption on November 6th
Weber County	Up for Adoption on December 5th

Port Authority Our Toolbox



Project Area
Creation



Rail &
Logistics



P3 (Public Private
Partnerships)



Public
Financing



Regional
Promotion



Branding &
Branding Expansion



Tax Differential
Community
Reinvestment



Federal &
Customs Interface



International
Shipping
Connections



Sustainability
Support





Thank you

Travis Kyhl, Central Utah Agri-Park

Central Utah Agri-Park



SIX COUNTY
ASSOCIATION OF GOVERNMENTS



Central Utah Agri-Park



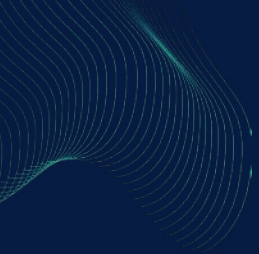
SIX COUNTY
ASSOCIATION OF GOVERNMENTS



**Governor's Office of
Economic Opportunity**



Jefferson Moss, The Point Innovation District



INNOVATION DISTRICT AT THE POINT



The Point: Utah's Innovation Community

The Point project will create a new innovation community and economic catalyst that is grounded in the unique character of its place.



River to Range

The River to Range is a 1.4-mile paved regional trail that will connect the Jordan River Parkway Trail to the west with the foothills of Draper's Corner Canyon to the east. For residents, employees, and visitors, the River to Range will encourage healthy living, provide recreational opportunities, offer an active way to commute to work, and establish a critical transit connection.



The Promenade

The Promenade will be a mixed-use development along a people-focused Main Street. It will include over 2 million square feet of office space, approximately 3,000 multi-family housing units, and 222,000 square feet of retail, shopping and restaurants, and grocery stores.



Taste of Place

The Taste of Place will be a go-to destination where Utahns can dine at a wide variety of indoor and outdoor restaurants. With a diverse selection of seasonal dining, rooftop culinary, casual quick service, and sweet treats options, the Taste of Place will offer high-quality culinary experiences guaranteed to satisfy any palette.



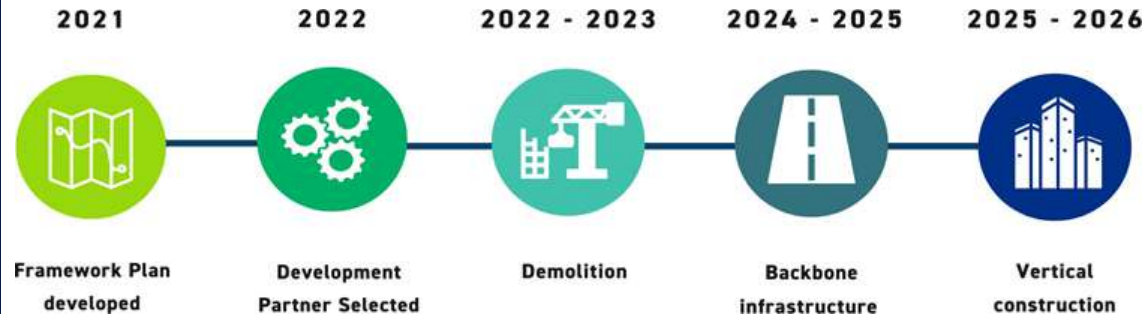
Central Park

Central Park will be a place that brings together urban living and outdoor recreation for Utahns and their families. The 2.5-acre park will be at the center of an outdoorsy urban hub boasting some of the best connections to the natural environment in the state and the country. Its use will be adaptive to accommodate seasonally appropriate activities year-round.



Convergence Hall

In 2023, the State of Utah approved \$50M in one-time state funding for the creation of Convergence Hall – the pinnacle building of The Point's Innovation District that is poised to bring together higher education, policymakers, investors, industry, students, entrepreneurs, etc. in a collaborative workspace.



Convergence Hall as a Facilitator of Bumpability

The ability to have incidental interactions with a variety of people, ideas, and resources, commonly known as bumpability, can be an essential requirement for success in today's world. Whether for individuals, organizations, or communities, it is a vital tool for exploring and discovering fresh ideas, building new relationships, and uncovering the resources needed to develop innovative solutions and intellectual property



Spatial Qualities

Student Housing

Flexible Study Space

University Office Space

Lecture Hall / Auditorium

Retail / Dining

Flexible Classroom Space

Innovation Museum / Makerspace

Incubator/ Venture Studio Space



Innovation Goals:

Leader in Innovation:

- a. → Establish Utah as a leader in innovation and commercialization in the field of higher education, driving impactful scientific advances, economic growth, and job creation.

Collaboration and Synergy:

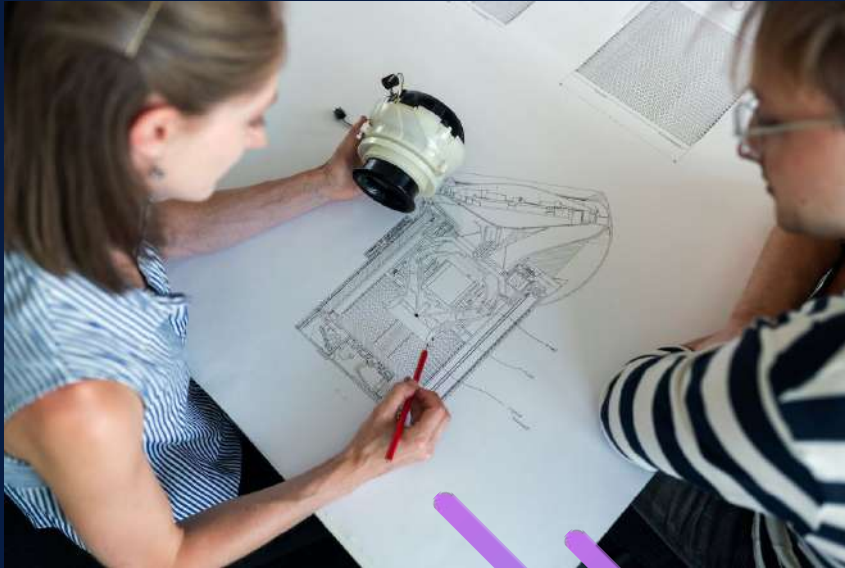
- a. → Encourage collaboration and synergy among universities, faculty, and departments to maximize research and innovation potential through shared resources and expertise.
- b. → Encourage and facilitate strong partnerships among different universities, programs, and departments to address major challenges through interdisciplinary research.

Public-Private Partnerships:

- a. → Engage with industry leaders, policy makers, and donors to foster public-private partnerships that elevate the value of higher education innovations and discoveries.
- b. → Empower faculty and students within all institutions of higher education to solve business and policy problems for the state and the nation.



UtahInnovation
LAB

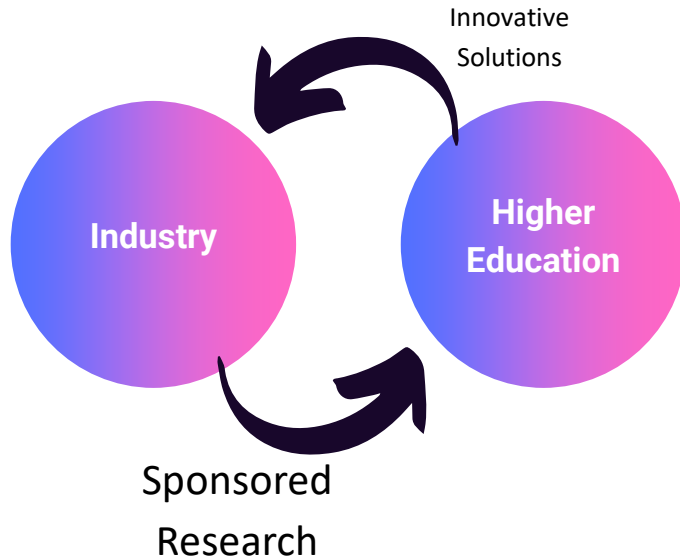


About us

The Utah Innovation Lab was created by the State of Utah to elevate Utah's economy by commercializing technologies discovered, advanced, or developed at Utah's institutions of higher education. Our goal is to bridge the gap between industry and higher education.

The Opportunity

Right now, inside Utah's university & technical schools is \$Bs worth of opportunity waiting to solve societies biggest challenges.



01

Redefining Higher Education

We are creating a world where institutions of higher education are laboratories of innovation for corporations and society. Where industry leaders task expert researchers with solving their biggest problem.

02

Reimagining Tech Transfer

Through the Utah Innovation Lab, all institutions of higher education in Utah will have access to the resources required for successful commercialization of promising innovations.

03

Changing the Industry-Education Dynamic

Instead of PUSHING innovation out of universities, we work with industry and government to PULL innovation that has market demand into industry.

Our Approach

CONNECTIONS FOR SUCCESS!

TEAM

Our Database of Operators connects companies to sector-specific previously successful & previously funded founders who have agreed to serve as mentors/operators.

VALUE-PROP

Our Industry Advisory Boards are made up of top experts who have agreed to advise companies within their expertise on the technical viability & industry desirability of their research.

CAPITAL

The Utah Innovation Fund is a \$15M venture capital fund that invests in promising technologies being developed & explored at universities and technical colleges in Utah. Our network of later-stage investors provides future capital for companies that continue to show promise.

CUSTOMERS

Our Industry Advisory Boards are made up of some of the largest employers and organizations in the state who have expressed interest in exploring relevant innovative technologies via customer relationships & partnerships.

OPERATIONS

Our Business Services Network connects founders & operators to relevant service providers who have a mission to support Utah's growing startup community.



UTAH POLICY
INNOVATION LAB

Utah Policy Innovation Lab

Public-private partnership that brings together academics, policy experts, & business leaders to collaborate & share best practices to ensure Utah is leading out on innovative policies that are rooted in research & practical experience.

The Policy Lab acts as a convener, breaking down silos & facilitating information sharing through workgroups, panels, research, etc.



 UTAH POLICY INNOVATION LAB

Navigating AI Policy in Utah: Opportunities and Risks Panel

When: Friday, June 2nd 2023 at 8:30am-10am
Where: Thomas S. Monson Center, SLC
Panelists: Rep. Jefferson Moss, Sen. Kirk Cullimore, Chris Bramwell-Chief Privacy Officer, Margaret Busse- Director of Commerce, Deno Himonas- Former State Supreme Court Justice, Alan Fuller-State CIO, Dr. Alex Lawrence-Weber State University, Barclay Burns, Matthew Poll, and Nick Pelikan.
Register: Seating is limited or Virtual Option - <https://Alpolicypanel.eventbrite.com>

 UTAH SYSTEM OF HIGHER EDUCATION
 UTAH LEGISLATURE
 WILSON SONSINI
 Governor's Office of Economic Opportunity
 WORLD TRADE CENTER UTAH
 Kinect Capital
 WIN



SAN RAFAEL
Energy Research Center



Governor's Office of
Economic Opportunity

Partnerships & Current Work

Energy Advisory Council

Energy Strategic Planning Committee

Blockchain & Digital Innovation Task Force

Data Privacy Working Group

AI Policy Working Group

United Economic Opportunity Commission – Technology, Innovation, &
Investment

Regulatory Sandbox

Impact Catalyst Internships

An innovative program designed to empower students to tackle the world's most pressing challenges.

- Hackathons
- Pitch Contests
- Corporate Innovation Research
- Design Thinking Fellowship
- Policy Innovators



Jeremy Pearson, USU San Rafael Energy Research Center



1) Molten Salt Nuclear Reactor Research



The ARC Generator



2) Advanced Coal Combustion and Power Cycle Research



5) Nuclear Batteries and Rockets



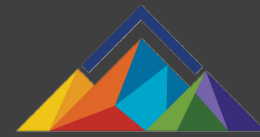
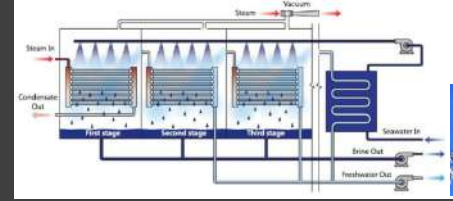
SAN RAFAEL Energy Research Center

Forging the Future of Energy

3) Hydrogen



4) Desalination: Freshwater and Minerals



UTAH OFFICE OF ENERGY DEVELOPMENT

Dustin Maughan, Program Manager at ASPIRE EV
Research at USU



ULCT Utah Projects Panel Session

Dustin Maughan, USU
ASPIRE Program Director



A glowing lightbulb is drawn on a chalkboard. The lightbulb is the central focus, with a bright yellow and orange glow emanating from its center. The background is a dark, textured chalkboard with some faint, light-colored markings. The text is overlaid on the left side of the lightbulb.

Utah Is Innovating!

The Quick Hits of Projects From Around the State

ULCT Annual Convention